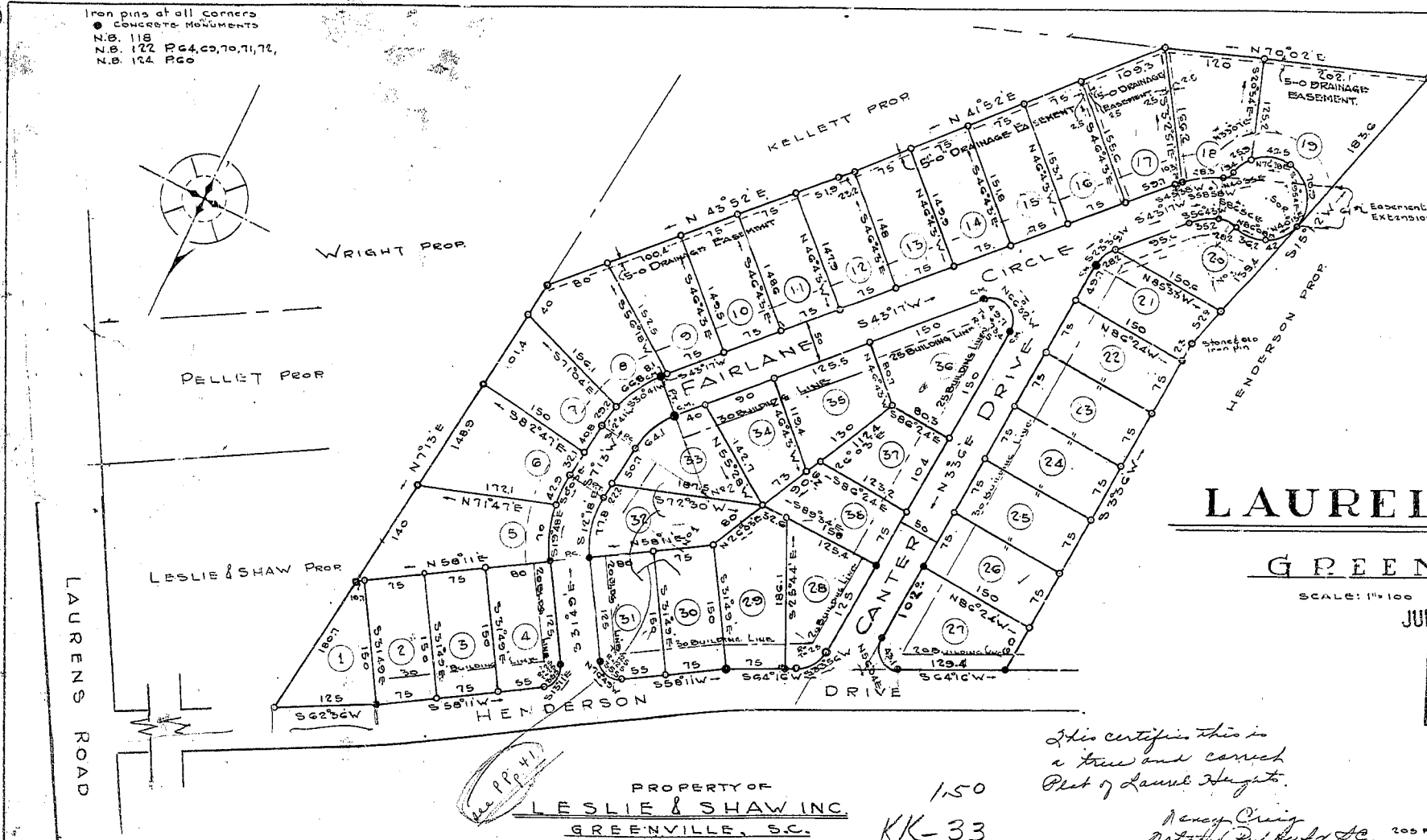


Plat Book-KK-Page 33 A

33

Iron pins at all corners
 ● CONCRETE MONUMENTS
 N.B. 118
 N.B. 122 P&C, 10, 11, 12,
 N.B. 124 P&C

CURVE DATA						
CURVE	A	T	D	L	L.C.	?
1	398.2	59.1	54.368	113.56	111.41	12.74
2	377.2	41.36	43.083	113.32	111.74	11.74
3	500.4	50	57.519	126.7	125.54	13.50
4	500.4	50.72	55.374	126.7	125.54	13.50
5	205.7	30.00	25.574	63.35	62.26	11.09
6	205.7	30.00	25.574	63.35	62.26	11.09
7	205.7	30.00	25.574	63.35	62.26	11.09
8	205.7	30.00	25.574	63.35	62.26	11.09
9	205.7	30.00	25.574	63.35	62.26	11.09
10	205.7	30.00	25.574	63.35	62.26	11.09
11	205.7	30.00	25.574	63.35	62.26	11.09
12	205.7	30.00	25.574	63.35	62.26	11.09
13	205.7	30.00	25.574	63.35	62.26	11.09
14	205.7	30.00	25.574	63.35	62.26	11.09
15	205.7	30.00	25.574	63.35	62.26	11.09
16	205.7	30.00	25.574	63.35	62.26	11.09
17	205.7	30.00	25.574	63.35	62.26	11.09
18	205.7	30.00	25.574	63.35	62.26	11.09
19	205.7	30.00	25.574	63.35	62.26	11.09
20	205.7	30.00	25.574	63.35	62.26	11.09
21	205.7	30.00	25.574	63.35	62.26	11.09
22	205.7	30.00	25.574	63.35	62.26	11.09
23	205.7	30.00	25.574	63.35	62.26	11.09
24	205.7	30.00	25.574	63.35	62.26	11.09
25	205.7	30.00	25.574	63.35	62.26	11.09
26	205.7	30.00	25.574	63.35	62.26	11.09
27	205.7	30.00	25.574	63.35	62.26	11.09
28	205.7	30.00	25.574	63.35	62.26	11.09
29	205.7	30.00	25.574	63.35	62.26	11.09
30	205.7	30.00	25.574	63.35	62.26	11.09
31	205.7	30.00	25.574	63.35	62.26	11.09
32	205.7	30.00	25.574	63.35	62.26	11.09
33	205.7	30.00	25.574	63.35	62.26	11.09
34	205.7	30.00	25.574	63.35	62.26	11.09
35	205.7	30.00	25.574	63.35	62.26	11.09
36	205.7	30.00	25.574	63.35	62.26	11.09
37	205.7	30.00	25.574	63.35	62.26	11.09
38	205.7	30.00	25.574	63.35	62.26	11.09
39	205.7	30.00	25.574	63.35	62.26	11.09
40	205.7	30.00	25.574	63.35	62.26	11.09



LAUREL HEIGHTS

NEAR GREENVILLE, S.C.

SCALE: 1"=100' APRIL 1956

JUL 6-1956 17251

FINAL PLAN APPROVED
 GREENVILLE CITY PLANNING & ZONING COMMISSION
 DATE 6-4-56 BY *Randy Craig*
 SECRETARY OF COMMISSION

PROPERTY OF
LESLIE & SHAW INC
 GREENVILLE, S.C.

150
 KK-33

This certifies this is a true and correct Plat of Laurel Heights.

Randy Craig
 Notary Public for S.C.

C. C. JONES & ASSOCIATES
 ENGINEERS
 205 FIRST FEDERAL SAVINGS & LOAN BUILDING
 GREENVILLE, S.C.



17251
 G
 July 1956
 M.H.
Randy Craig